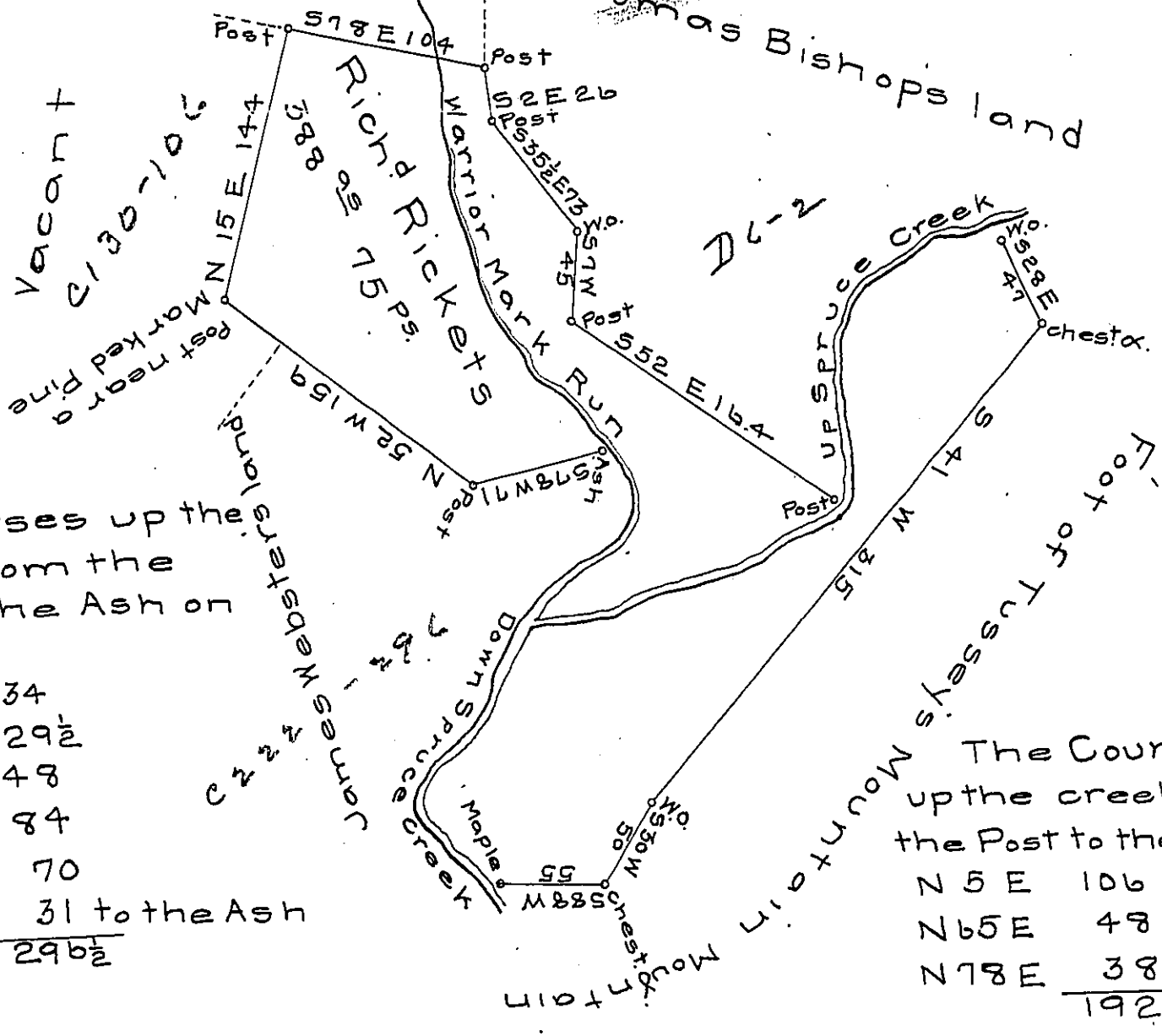


FORM No. 1.

D 8-185

Phench (obl.) Bond Thomas Bishops land

Vacant
C130-106



The Courses up the
Creek from the
Maple to the Ash on
the Run

- N 40 W 34
- N 45 W 29½
- N 55 E 48
- N 27 E 84
- N 45 E 70
- N 45 W 31 to the Ash

- 296½

The Courses
up the creek from
the Post to the W.O.

- N 5 E 106
- N 65 E 48
- N 78 E 38 W.O.

- 192

Situate on both sides of Spruce Creek and
the Warrior Mark Run in Tyrone township Hunting-
don County containing 388^{as} 75^{ps} and the usual
allowance surveyed (obl.) 2^d day of October 1788 in
pursuance of a warrant dated the 15th day of
Feb'y 1786.

John Canan D.S.

To John Lukens Esquire
S.G.

IN TESTIMONY that the above is a copy of the original remaining on file in
the Department of Internal Affairs of Pennsylvania, made
conformably to an Act of Assembly approved the 16th day of
February, 1833, I have hereunto set my Hand and caused
the Seal of said Department to be affixed at Harrisburg,
this thirteenth day of August 1906.

Laac R. Brown
Secretary of Internal Affairs.